

> PVX Minimount®

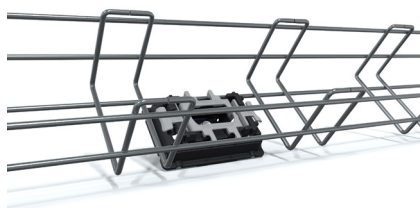
Technical Datasheet Ø6,3mm

Article number: PVX16032021

Description

Mesh tray mounting system used for installation on pitched roofs and wall mounting.

FEM Analysis: Load, Snow Load, Wind Force. **Multilock system** for hands-free assembly. Top: mesh tray insert 60 – 200mm width with an option for 1 x mesh tray clip.



Technical specifications

Measurements (mm):	L 96 x W 65 x H 27, Ø6,3mm
Weight:	50 gr
Materials:	Nylon PA6GF30, Halogen free, UV resistant
Colour:	PVX Minimount – Black Mesh tray clip – Gray
Application:	Mesh tray mounting system used for installation on pitched roofs and wall mounting.
Mesh tray width:	60mm – 200mm wide
Multilock system:	Hands-free assembly
Watertight mounting:	EPDM rubber
Temperature:	- 40°C to + 100°C



Load: **>600KG**



Snow load: **>600KG**



Wind force: **10**



Product warranty: **15 jaar**