



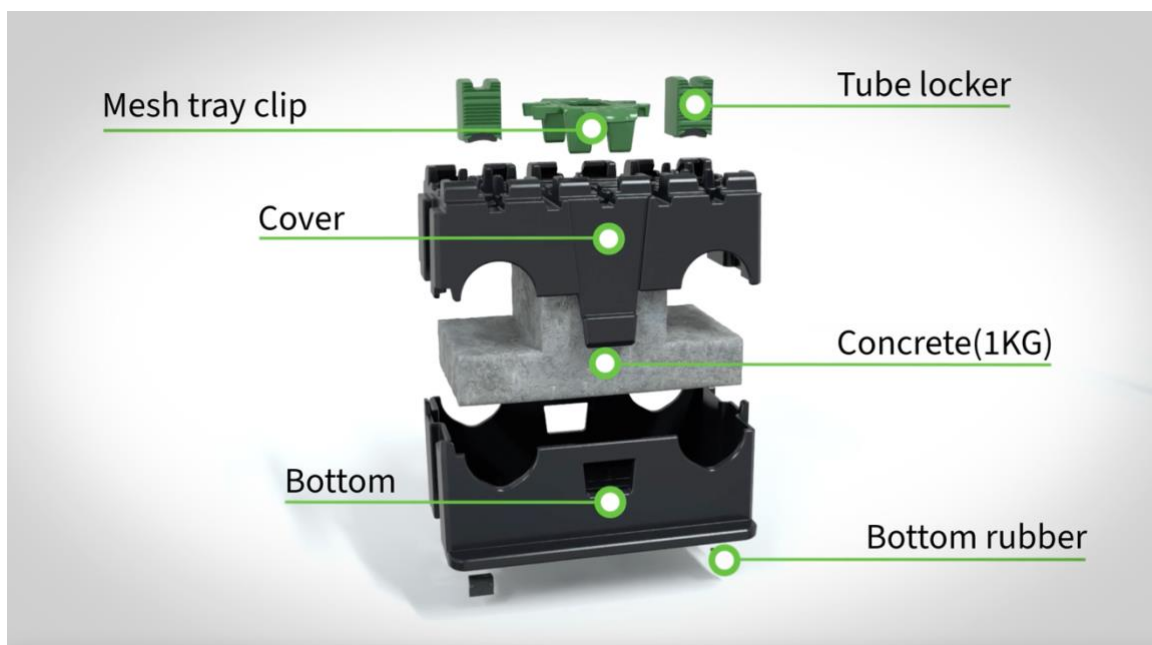
Installation Manual Tube

PVX Multimount®

1. Introduction

The PVX Multimount is a wind-certified and FEM-analyzed mounting system developed by PVX Mounting Systems. It is designed for the installation of mesh trays and tubes on flat roofs with a slope of up to 5°. The system combines easy installation with maximum stability and is compatible with all brands of tubes and mesh trays.

This manual describes the correct tube installation procedure for a safe and durable setup of the PVX Multimount. A separate installation manual is available for the mesh tray installation procedure.



Visual 1.1 - PVX Multimount exploded view



Installation Manual Tube

2. Safety & Preparation

Read this manual carefully before starting the installation. The installer is responsible for complying with all applicable safety and construction standards, including:

- **NEN-EN 1991-1-4:2011** – Wind loads
- **NEN 7250:2014** – Integration of photovoltaic systems in and on buildings

Before installation, make sure that:

- the roof surface is clean, level, and stable;
- there are no obstacles along the cable route;
- the correct support spacing has been calculated using the **PVX Calculator**.

Note:

According to **NEN 1010 clause 134.1.1**, an installation must be carried out in accordance with the manufacturer's instructions. Therefore, the use of the **PVX Calculator** is mandatory to meet the conditions of the application warranty. The product warranty remains valid at all times.



**PVX
CALCULATOR**

 Visual 2.1 – Logo PVX Calculator



Installation Manual Tube

3. Step-by-step Installation

Step 1 - Preparation

Suitable for tubes with a diameter of Ø16-32 mm. Mark the positions of the first and last PVX Multimounts according to the calculated support spacing. Check that all required components are present.

Step 2 - Placement of the Supports

Position the PVX Multimounts aligned along the cable route. Ensure that the base is stable on the roof surface.

Step 3 - Alignment Check


Use a straight edge to verify the alignment of the supports. If necessary, adjust the positions slightly.

Step 4 - Tube Installation Preparation

Remove the cover of the PVX Multimount by simultaneously squeezing the black parts on both sides and lifting the cover upward.

(Alternative: insert the Ø16-32 mm tube directly through the tube openings).



 Visual 3.1 - Lid removal



Installation Manual Tube

Step 5 - Tube Placement

Insert the Ø16-32 mm tube into the PVX Multimount and ensure it is correctly and securely seated in the support's tube opening. Next, replace the cover by simultaneously squeezing the black parts on both sides and pressing it down until it clicks into place.



 Visual 3.2 - Tube Placement Ø16-32 mm

Step 6 - Securing the Tube

Press the tube lock firmly downward until it clicks into place and the tube is securely fastened.



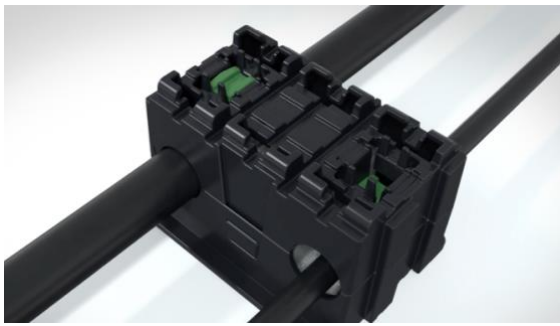
 Visual 3.3 - Pressing the tube lock



Installation Manual Tube

Step 7 - Final Inspection

Walk along the entire route to check that all PVX Multimounts are correctly installed, the alignment is maintained, and the tube is properly supported everywhere.




 Visual 3.4 - Route inspection

For your information: Unlocking the tube

Simultaneously squeeze the black protrusions and lift the tube upward to unlock it.



 Visual 3.5 - Tube unlocking



Installation Manual Tube

4. Warranty and Compliance

The **product warranty** from **PVX Mounting Systems** is automatically valid for all delivered products, regardless of the application. This warranty exclusively covers product quality, material properties, and workmanship under normal use.

The **application warranty** is only valid when:

1. An **approved calculation** has been performed for the project using the **PVX Calculator**, and
2. The installation has been carried out according to the calculated support distance and applicable installation instructions.

The use of the **PVX Calculator** is therefore mandatory to be eligible for the application warranty.

Product warranty: 15 years

Application warranty: 15 years with PVX Calculator (with approved calculation)

Standards:

- NEN-EN 1991-1-4:2011
- NEN 7250:2014
- CUR Recommendation 103:2005



Installation Manual Tube

5. Product links

PVX Multimount Installation Video:

<https://youtu.be/xSl01EM0SIY?si=JOalsG9ObFPXf1kl>

PVX Calculator:

<https://pvxmountingsystems.com/pvx-calculator/>

3D - Augmented reality PVX Multimount:

<https://vulp.studio/pvxmultimount/pvxmultimount/nl-NL/?hotspots=1&hotspot-button=1&color=default&cg-clip=none&cg-pipe-left=none&cg-pipe-right=none>

Website PVX Mounting Systems - PVX Multimount:

<https://pvxmountingsystems.com/plat-dak/>

Website PVX Mounting Systems:

<https://pvxmountingsystems.com>

QR-code PVX Mounting Systems website:

