



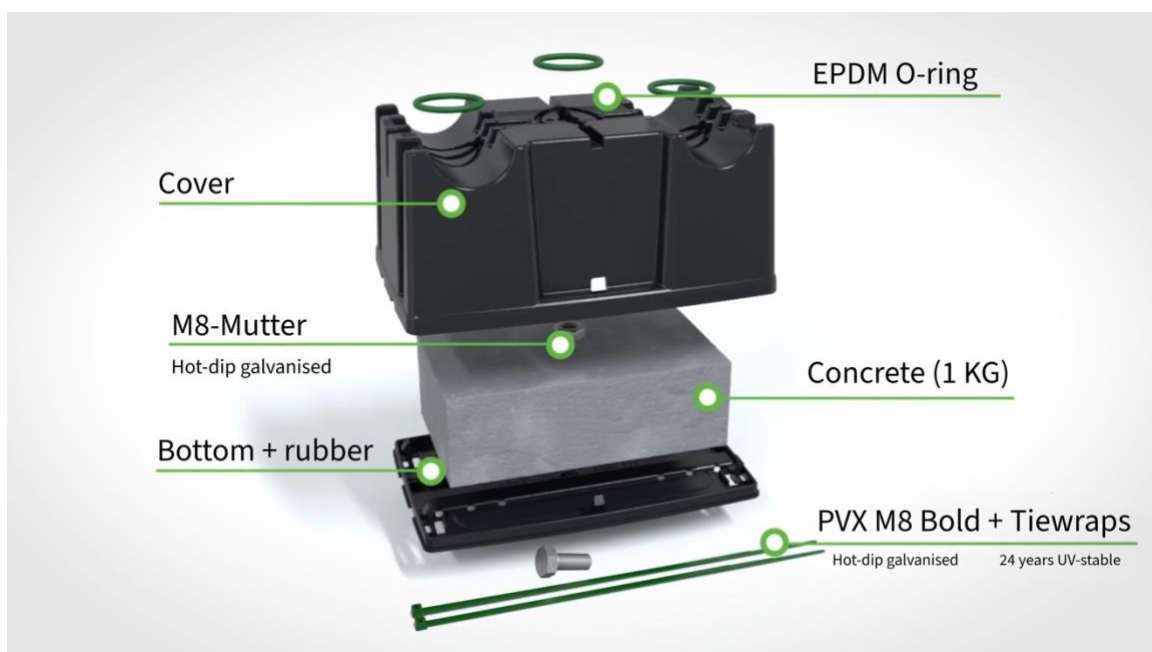
Installation Manual Tube

PVX Multistrap+®

1. Introduction

The PVX Multistrap+ is a wind-certified and FEM-analyzed mounting system developed by PVX Mounting Systems. It is designed for the installation of tubes and M8 applications on flat roofs with a slope of up to 5°. The system combines easy installation with maximum stability and is compatible with all brands of tubes and M8 bolted applications.

This manual describes the correct tube installation procedure for a safe and durable installation of the PVX Multistrap+. A separate installation manual is available for the M8 applications installation procedure.



📷 Visual 1.1 – PVX Multistrap+ exploded view



Installation Manual Tube

2. Safety & Preparation

Read this manual carefully before starting the installation. The installer is responsible for complying with all applicable safety and construction standards, including:

- **NEN-EN 1991-1-4:2011** - Wind loads
- **NEN 7250:2014** - Integration of photovoltaic systems in and on buildings

Before installation, make sure that:

- the roof surface is clean, level, and stable;
- there are no obstacles along the cable route;
- the correct support spacing has been calculated using the **PVX Calculator**.

⚠ **Note:**

According to **NEN 1010 clause 134.1.1**, an installation must be carried out in accordance with the manufacturer's instructions. Therefore, the use of the **PVX Calculator** is mandatory to meet the conditions of the application warranty. The product warranty remains valid at all times.



**PVX
CALCULATOR**

 Visual 2.1 - Logo PVX Calculator



Installation Manual Tube

3. Step-by-step Installation

Step 1 - Preparation

Suitable for 2 × Ø16 mm-32 mm tubes or 1 × Ø16 mm-100 mm tube. Mark the positions of the first and last PVX Multistrap+ according to the calculated support spacing. Check that all required components are present.

Step 2 - Placement of the Supports

Position the PVX Multistraps+ aligned along the cable route. Ensure that the base is stable on the roof surface.

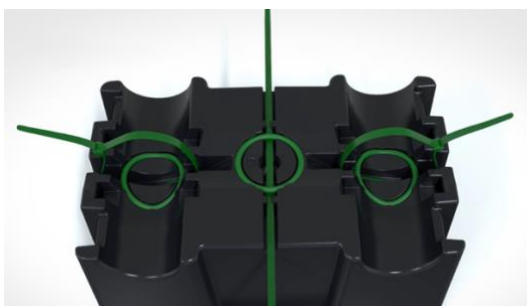
Step 3 - Alignment Check

Use a straight edge to verify the alignment of the supports. If necessary, adjust the positions slightly.

Step 4 - Preparation of cable ties

Insert the required number of **PVX Mounting Systems cable ties** in advance through the designated cable tie openings in the carrier, or install them after placing the tube.

⚠ Note: The supplied cable ties are suitable for tubes up to **Ø50 mm**. For larger diameters, the installer must provide cable ties with a width of **4.8 mm** and an appropriate length.



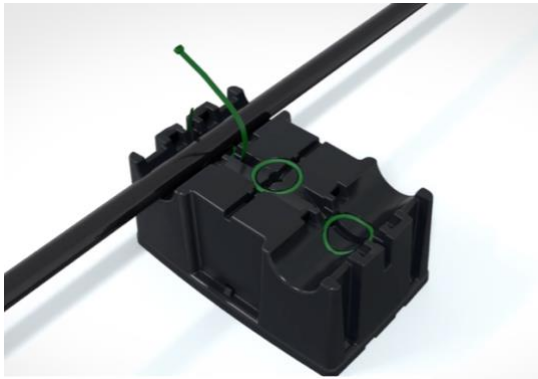
 Visual 3.1 - Placement of PVX Mounting Systems cable ties



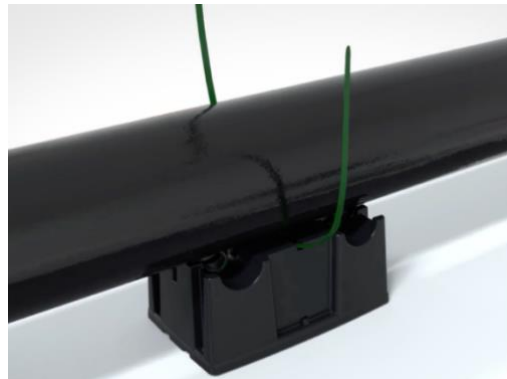
Installation Manual Tube

Step 5 - Tube placement

Place the tube in the PVX Multistrap+ and check that it rests correctly in/on the tube channel of the carrier.



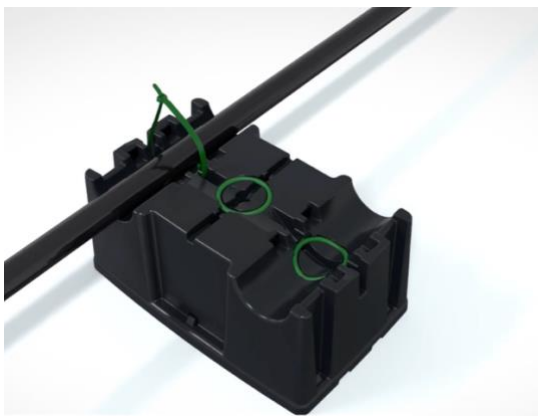
📷 Visual 3.2 - Tube Ø16 - 32mm **in** the tube channel



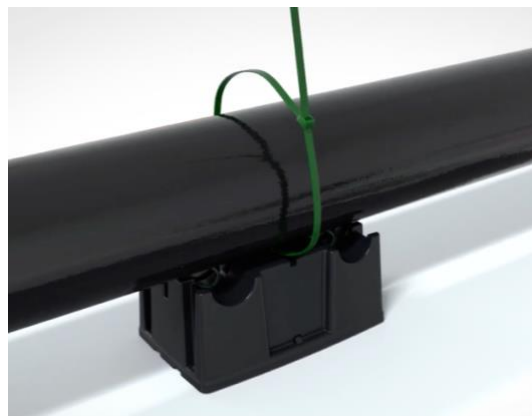
📷 Visual 3.3 - Tube Ø16 - 100mm **on** the tube channel

Step 6 - Securing the tube

Fasten the tube by tightening the cable tie firmly and neatly trim off the excess.



📷 Visual3.4 - Installation of Ø16-32 tube



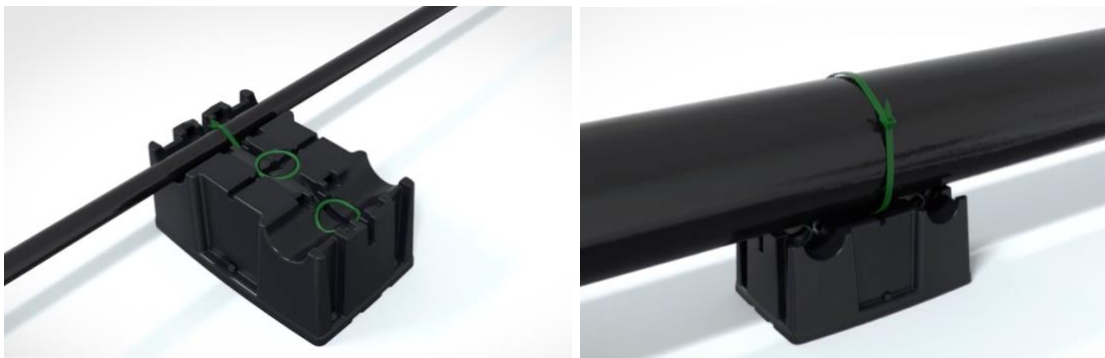
📷 Visual 3.5 - Installation of Ø 16-100mm tube



Installation Manual Tube

Step 7 - Final Inspection

Walk along the entire route to check that all PVX Multistraps+ are correctly installed, the alignment is maintained, and the tube is properly supported everywhere.



 Visual 3.6 - Route inspection

4. Warranty and Compliance

The **product warranty** from **PVX Mounting Systems** is automatically valid for all delivered products, regardless of the application. This warranty exclusively covers product quality, material properties, and workmanship under normal use.

The **application warranty** is only valid when:

1. An **approved calculation** has been performed for the project using the **PVX Calculator**, and
2. The installation has been carried out according to the calculated support distance and applicable installation instructions.

The use of the **PVX Calculator** is therefore mandatory to be eligible for the application warranty.

Product warranty: 15 years

Application warranty: 15 years with PVX Calculator (with approved calculation)



Installation Manual Tube

Standards:

- NEN-EN 1991-1-4:2011
 - NEN 7250:2014
 - CUR Recommendation 103:2005
-

5. Product links

PVX Multistrap+ Installation Video:

<https://youtu.be/A6G7igiPmHU?si=SfGvKLUeylscrZug>

PVX Calculator:

<https://pvxmountingsystems.com/pvx-calculator/>

3D - Augmented reality PVX Multistrap+:

<https://vulp.studio/pvxmultimount/pvxmultistrap/nl-NL/?hotspots=1&hotspot-button=1&color=default&cg-bolt=none&cg-pipe-left=none&cg-pipe-right=none&cg-pipe-center=none>

Website PVX Mounting Systems - PVX Multistrap+:

<https://pvxmountingsystems.com/plat-dak/>

Website PVX Mounting Systems:

<https://pvxmountingsystems.com>

QR-code PVX Mounting Systems website:

